

Manufacturing

Assembly Areas

Manual Workstations



Manufacturing

Efficient power and data distribution for manufacturing

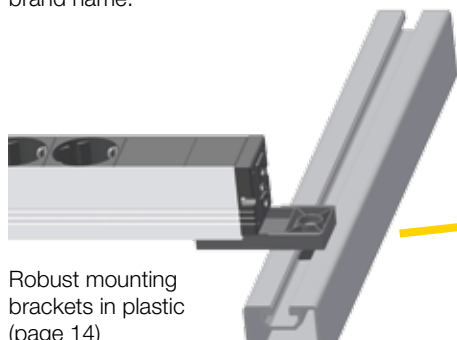
**BACH
MANN**

Bachmann Manufacturing

Efficient power and data distribution for manufacturing

With Bachmann Manufacturing systems you can be sure of having access to the best connectors and connections wherever you are in the world. Our systems are configurable with all standard international socket outlets and data connections. Modules can be retrofitted or interchanged quickly and easily. In short, when it comes to energy and data management systems that are fit for the future, Bachmann maximises your options.

At Bachmann, our top priority is working in partnership with the customer. This applies right from the start, during the phase we refer to as “customised engineering”. For our international development team, providing engineering services for customised solutions is as important as developing the Bachmann range as a whole. This approach results in a whole host of utility models and patents relating to technical innovations and special solutions bearing the Bachmann brand name.



Robust mounting brackets in plastic (page 14)



Configurable PDUs (page 10)



International socket outlets and components with RCD/MCB and overvoltage protection (page 13)



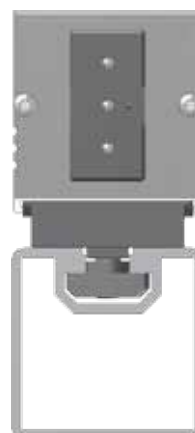
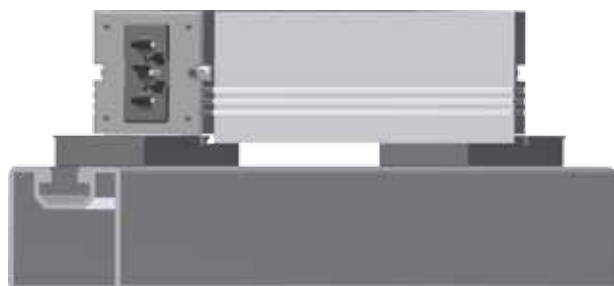
ESD units (page 9)



System solutions for manual workstations




FACTORY – the professional solution



Mounts flush with profile

Power strips in aluminium profile, 1 U, width 44.5 mm, ideally suited for mounting on 45 mm T-slot profiles

- Strip does not protrude over the 45-mm T-slot profile
- Can be mounted on 30, 45 or 60 mm T-slot profiles
- Can be mounted on the standard profiles of various manufacturers
- Easy to fit with specially designed mounts (designed for ESD)
- Mains input and output based on Wieland GST18 connector system
- Strips can be linked to one another using device extension cables (see page 17)
- Power infeed direct to mains input via supply cable (see page 17) or via feed modules (see from page 6)

 Max. 16A/230V~

Art. no. | Price in €* | Version

FACTORY 1 U 3 x earthing contact, GST18, max. 16A / 230V~ / 3680W **Length: approx. 294 mm**

Suitable mountings on page 14



509.001	35.50	<ul style="list-style-type: none"> • Anodised aluminium profile, 1 U • 3 socket outlets with earthing contact, RAL7035, set at 35° • Power input: GST18i3 plug, black • Power outlet: GST18i3 socket, black • Incl. safety plug catch
---------	-------	--

FACTORY 1 U 2 x earthing contact, GST18, max. 16A / 230V~ / 3680W **Length: approx. 294 mm**

1 switch, illuminated, controls power outlet

Suitable mountings on page 14



509.002	44.70	<ul style="list-style-type: none"> • Anodised aluminium profile, 1 U • 2 socket outlets with earthing contact, RAL7035, set at 35° • 1 switch, red, 2-pole, controls power outlet (e.g. for lamp) • Power input: GST18i3 plug, black • Power outlet: GST18i3 socket, black • Incl. safety plug catch
---------	-------	--


FACTORY 1 U 2 x earthing contact, GST18, max. 16A / 230V~ / 3680W **Length: approx. 294 mm**

1 switch, illuminated, controls power input (sockets and outlet)

Suitable mountings on page 14



509.003	44.70	<ul style="list-style-type: none"> • Anodised aluminium profile, 1 U • 1 switch, red, 2-pole, controls power input • 2 socket outlets with earthing contact, RAL7035, set at 35° • Power input: GST18i3 plug, black • Power outlet: GST18i3 socket, black • Incl. safety plug catch
---------	-------	---

 Max. 16A/230V~

Art. no. | Price in €* | Version

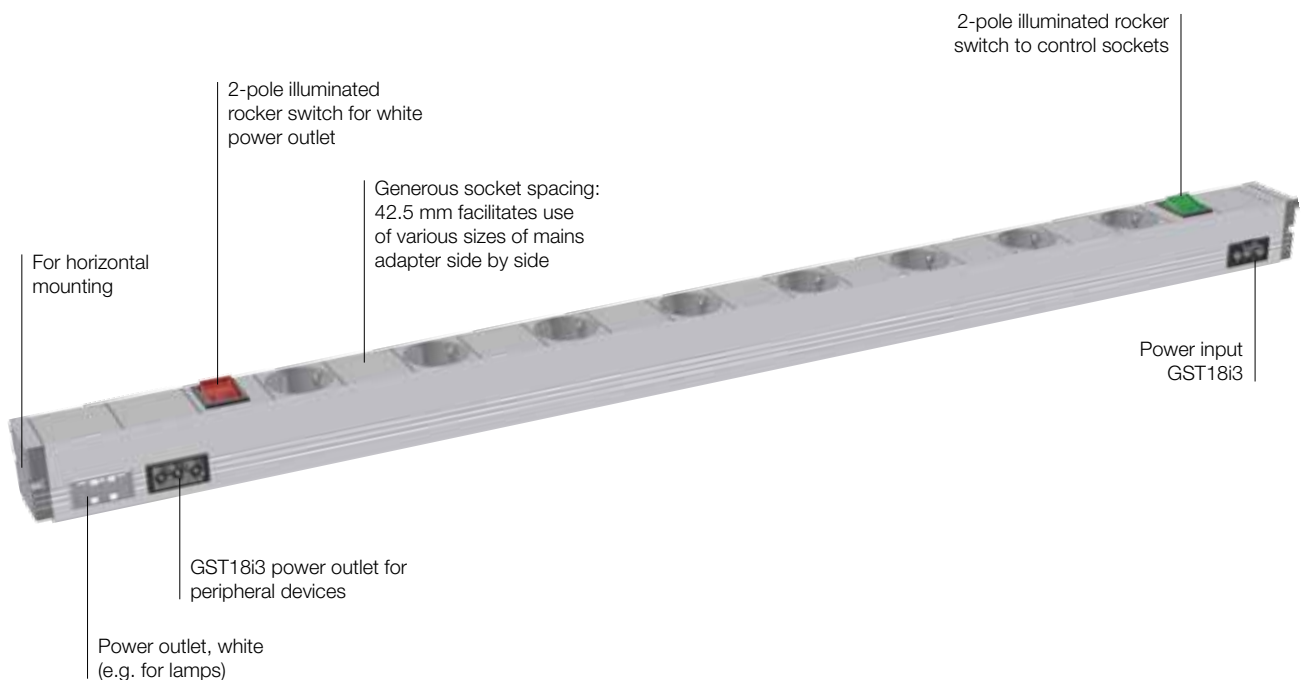
FACTORY 1 U 8 x earthing contact, GST18, max. 16A / 230V~ / 3680W Length: approx. 866 mm
2 switches, illuminated Suitable mountings on page 14

509.004	116.20	<ul style="list-style-type: none"> · Anodised aluminium profile, 1 U · 1 switch, green, 2-pole, controls sockets · 8 socket outlets with earth contact, RAL7035, set at 35°, with spacing between sockets · 1 switch, red, 2-pole, controls only white auxiliary outlet · Power input on side of profile: · Power input: GST18i3 plug, black · Power outlets: 2 x GST18i3 sockets, black/white · Incl. safety plug catch
---------	--------	--



FACTORY 1 U 10 x earthing contact, GST18, max. 16A / 230V~ / 3680W Length: approx. 1086 mm
2 switches, illuminated Suitable mountings on page 14

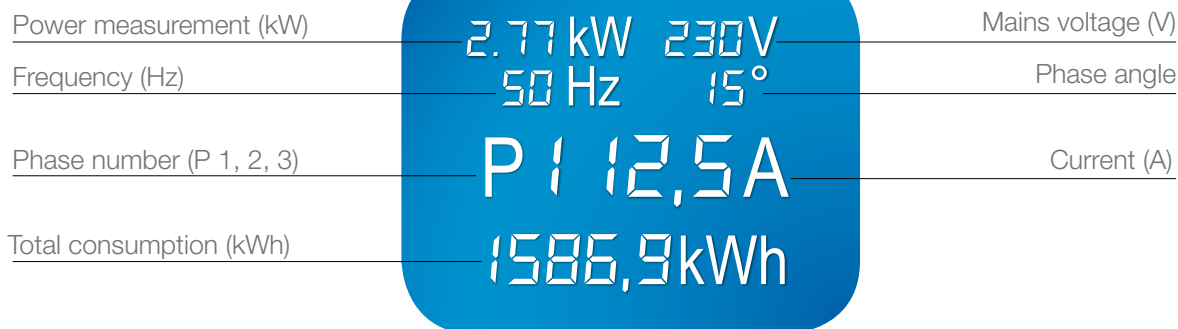
509.005	139.00	<ul style="list-style-type: none"> · Anodised aluminium profile, 1 U · 1 switch, green, 2-pole, controls sockets · 10 socket outlets with earth contact, RAL7035, set at 35°, with spacing between sockets · 1 switch, red, 2-pole, controls sockets · Power input on side of profile: · Power input: GST18i3 plug, black · Power outlets: 2 x GST18i3 sockets, black/white · Incl. safety plug catch
---------	--------	---



BLUENET – spotting potential and using it

Bachmann's BlueNet range creates optimal conditions for efficient energy management. It makes energy consumption transparent – and thus controllable – with intelligent products that help you to gather current data wherever energy is consumed, and thus to spot potential energy savings – and to document them and to use them.

- Integrated function for measuring current, voltage, power, phase angle, frequency and total consumption (BlueNet Metered Plus)
- Measured values are shown in the display
- Modular construction allows configuration of PDUs to customers' specifications



Art. no. | Price in €* | Version

FACTORY 1 U Metered BlueNet, GST18, max. 16A / 230V~ / 3680W

Length: approx. 191 mm

Current measurement

Suitable mountings on page 14

509.009

196.00

- Anodised aluminium profile, 1 U
- 1 current measurement (digital ammeter)
- Power input: GST18i3 plug, black
- Power outlet: 2 x GST18i3 socket, black
- Features of current measurement:
Range 0-16A, max. current 32A,
Precision: class 1, backlit liquid crystal display



FACTORY 1 U Metered Plus BlueNet, GST18, max. 16A / 230V~ / 3680W

Length: approx. 191 mm

Current and power measurement with phase angle indication

Suitable mountings on page 14

509.012

275.00

- Anodised aluminium profile, 1 U
- 1 current + power measurement
- Power input: GST18i3 plug, black
- Power outlet: 2 x GST18i3 socket, black
- Power measurement features:
backlit liquid crystal display; accuracy class 1, single phase, max. 16A
Mains voltage (V), current (A), frequency (Hz), phase angle,
energy (kWh) and power (kW) measurement



Feed modules – greater safety at the workstation

Feed module in aluminium profile, 1 U (width 44.5 mm) with protective devices and 2 power outlets

- Can be used as the base unit for any power strip
- Easy to fit with specially designed mounts (designed for ESD)
- Connects to power strip via extension cable (see page 17)
- 1 x power input and 2 x power outlets in Wieland GST18 system for connecting to one or two power strips or workstations
- Integral protector unit with overvoltage protection, miniature circuit breaker or residual current device
- Feed module with built-in current and power measurement to record energy consumption of workstation



Art. no. | Price in €* | Version

FACTORY 1 U Overvoltage protector with filter, GST18, max. 16A/230V~/3680W Length: approx. 235 mm

Suitable mountings on page 14

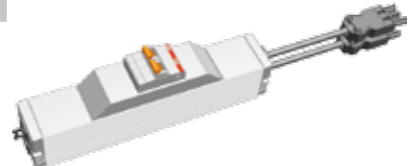
509.006	58.20	<ul style="list-style-type: none"> • Anodised aluminium profile, 1 U • 1 overvoltage protector, 6.5kA with optical function and fail indicator; • Mains filter, 30 MHz • Power input: GST18i3 plug, black • Power outlet: 2 x GST18i3 socket, black
---------	-------	--



FACTORY 1 U Miniature circuit breaker, GST18, max. 16A / 230V~ / 3680W Length: approx. 235 mm

Suitable mountings on page 14

509.007	75.40	<ul style="list-style-type: none"> • Anodised aluminium profile, 1 U • 1 Miniature circuit breaker, 16A, 2-pole, type B • Power input: GST18i3 plug, black • Power outlet: 2 x GST18i3 socket, black
---------	-------	--



FACTORY 1 U Residual current device* (RCD), GST18, max. 16A / 230V~ / 3680W Length: approx. 235 mm

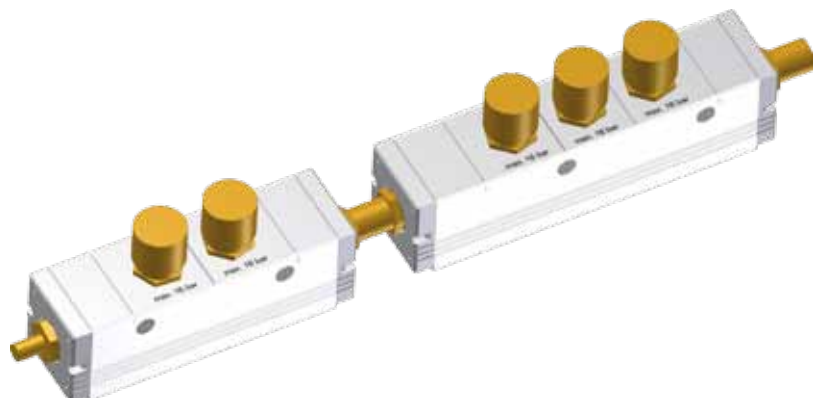
Suitable mountings on page 14

509.008	178.60	<ul style="list-style-type: none"> • Anodised aluminium profile, 1 U • 1 residual current device, 16A, tripping current 10mA, response time 30 ms, 2-pole • Power input: GST18i3 plug, black • Power outlet: 2 x GST18i3 socket, black <p>* From 1 February 2009 all mains circuits supplying power sockets used by non-technical specialists must be fitted with an RCD. Indoor use: up to 20A / Outdoor use: up to 32A</p>
---------	--------	--



COMPRESSED AIR – everything in one system

MANUFACTURING



Aluminium profile, 1 U (width 44.5 mm) with standard compressed-air outlets for up to 16 bar

- Simple to fit with specially designed mountings
- Standard compressed air outlets, nominal diameter 7
- Infeed and onward supply via nominal diameter 5
- Strips can be linked to one another directly or via a connecting hose
- Other nominal diameters and configurations are available on request

Art. no. | Price in €* | Version

FACTORY 1 U, 2 x compressed air outlets, max. 16 bar

Length: approx. 147 mm

Suitable mountings on page 14

509.010

99.60

- Anodised aluminium profile, 1 U
- 2 compressed air outlets (NW7 coupler)
- Compressed air inlet via NW5 connector
- Compressed air outlet via NW5 coupler

FACTORY 1 U, 3 x compressed air outlets, max. 16 bar

Length: approx. 187 mm

Suitable mountings on page 14

509.011

127.00

- Anodised aluminium profile, 1 U
- 3 compressed air outlets (NW7 coupler)
- Compressed air inlet via NW5 connector
- Compressed air outlet via NW5 coupler

Compressed Air

Ordinary air is forced via compressors to a higher pressure and can be used to drive a variety of equipment. Bachmann FACTORY compressed-air units distribute the compressed air to two or three access points for

end-use devices (screwdrivers, compressed air guns etc). Each compressed air unit also has a compressed-air outlet, allowing more than one unit to be used in combination.

ESD – all-round protection

Aluminium profile, 1 U (width 44.5 mm) with standard ESD connectors

- Simple to fit with specially designed mountings (**ESD-capable**)
- Integrates simply into ESD design of workstation via standard plug connectors and so can be used as **EBP (earth bonding point)**
- Other nominal diameters and configurations are available on request



Art. no. | Price in €* | Version

FACTORY 1 U 3 x ESD 10 ohm		Length: approx. 104.5 mm
		Suitable mountings on page 14
509.013	36.90	<ul style="list-style-type: none"> · Anodised aluminium profile, 1 U · 2 x ESD snap connector sockets, 10 mm, 10 ohm · Input: 3 m cable, green/yellow with M4 ring termination



FACTORY 1 U 3 x ESD 10 ohm		Length: approx. 147 mm
		Suitable mountings on page 14
509.014	44.10	<ul style="list-style-type: none"> · Anodised aluminium profile, 1 U · 3 x ESD snap connector sockets, 10 mm, 10 ohm · Input: 3 m cable, green/yellow with M4 ring termination



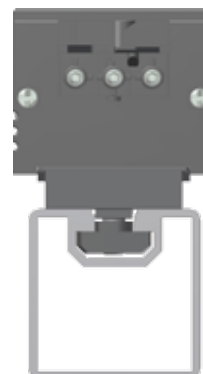
ESD

ESD is the abbreviation for electrostatic discharge, which occurs when two bodies at different voltage potentials come into contact and their charges equalise. Electrostatic charges are created when two dissimilar materials are rubbed together or are separated from one another.

Examples include: walking on plastic floors, rubbing against synthetic clothing, the displacement of plastic containers, the unrolling of adhesive PVC tapes or the movement of conveyor belts.


In modern workspaces static charges can create high static voltages. Charges of above 10 kV are not uncommon. Where air humidity is below 20 %, values of 30 kV have been recorded.

STEP – the low-cost alternative



Power strips with plastic or aluminium profile (width 52 mm) - a simple modular electrification system


- Compact dimensions and robust housing
- Can be mounted on T-slot profiles and the standard profiles of various manufacturers
- Easy to fit with specially designed mounts (ESD-capable)
- Mains input and output based on Wieland GST18 connector system
- Strips may optionally be fitted with modules (see from pages 6 and 11)
- Strips can be linked to one another using device extension cables (see page 17)
- Power infeed direct to mains input via supply cable (see page 17) or via feed modules (see page 6f and page 11)

 Max. 16A/230V~

Art. no. | Price in €* | Version


STEP BASE 3 x earthing contact, GST18, max. 16A / 230V~ / 3680W Length: approx. 220 mm

Suitable mountings on page 14

	336.600	11.03	<ul style="list-style-type: none"> • Light-grey plastic profile, black socket outlets • 3 x socket outlets with earthing contact, set at 35° • Power input: GST18i3 plug, black • Power outlet: GST18i3 socket, black • Incl. safety plug catch


STEP BASE 3 x earthing contact, red, GST18, max. 16A / 230V~ / 3680W Length: approx. 220 mm


Suitable mountings on page 14

	336.601	11.36	<ul style="list-style-type: none"> • Light-grey plastic profile, red socket outlets • 3 socket outlets with earthing contact, set at 35° • Power input: GST18i3 plug, black • Power outlet: GST18i3 socket, black • Incl. safety plug catch

STEP BASE 4 x earthing contact, GST18, max. 16A / 230V~ / 3680W Length: approx. 262.5 mm

Suitable mountings on page 14

	336.604	12.66	<ul style="list-style-type: none"> • Light-grey plastic profile, black socket outlets • 4 socket outlets with earthing contact, set at 35° • Power input: GST18i3 plug, black • Power outlet: GST18i3 socket, black • Incl. safety plug catch

 Max. 16A/230V~

Art. no. | Price in €* | Version

STEP ALU 1 x switch, 3 x earthing contact, GST18, max. 16A / 230V~ / 3680W Length: approx. 262.5 mm

1 x switch, controls sockets only Suitable mountings on page 14

906.003	32.55	<ul style="list-style-type: none"> · Anodised aluminium profile, black socket outlets · 1 switch, green, 2-pole, illuminated, switches sockets only (not power outlet) · 3 socket outlets with earthing contact, set at 35° · Power input: GST18i3 plug, black · Power outlet: GST18i3 socket, black · Incl. safety plug catch
---------	-------	--



STEP ALU 1 x switch, 3 x earthing contact, GST18, max. 16A / 230V~ / 3680W Length: approx. 262.5 mm

1 x switch, controls power input (sockets and power outlet) Suitable mountings on page 14

906.031	32.55	<ul style="list-style-type: none"> · Anodised aluminium profile, black socket outlets · 1 switch, green, 2-pole, illuminated, controls power input · 3 socket outlets with earthing contact, set at 35° · Power input: GST18i3 plug, black · Power outlet: GST18i3 socket, black · Incl. safety plug catch
---------	-------	--



STEP ALU, GST18, max. 16A / 230V~ / 3680W Length: approx. 220 mm

1 x custom module Suitable mountings on page 14

906.000	34.86	<ul style="list-style-type: none"> · 1 anodised aluminium profile, 1 U · 3 socket outlets with earthing contact, set at 35° · 1 custom module cover, blank · Power input: GST18i3 plug, black · Power outlet: GST18i3 socket, black · Incl. safety plug catch
---------	-------	---



CUSTOM

STEP ALU, GST18, max. 16A / 230V~ / 3680W Length: approx. 220 mm

Overvoltage protection Suitable mountings on page 14

336.004	53.13	<ul style="list-style-type: none"> · Anodised aluminium profile, 1 U · 1 overvoltage protection unit, 6.5kA, with function and fail indicator; mains filter 30 MHz · Power input: GST18i3 plug, black · Power outlet: GST18i3 socket, black · Incl. safety plug catch
---------	-------	--



STEP ALU, GST18, max. 16A / 230V~ / 3680W Length: approx. 220 mm

Miniature circuit breaker, 16A Suitable mountings on page 14

336.015	77.28	<ul style="list-style-type: none"> · Anodised aluminium profile, 1 U · 1 miniature circuit breaker, 16A, 2-pole, type B · Power input: GST18i3 plug, black · Power outlet: GST18i3 socket, black · Incl. safety plug catch
---------	-------	---



STEP ALU, GST18, max. 16A / 230V~ / 3680W Length: approx. 220 mm

Residual current device, 16A, 10mA Suitable mountings on page 14

906.067	104.79	<ul style="list-style-type: none"> · Anodised aluminium profile, black socket outlets · 1 residual current device, 16A, tripping current 10mA, response time 30 ms, 2-pole · Power input: GST18i3 plug, black · Power outlet: GST18i3 socket, black · Incl. safety plug catch
---------	--------	--



AUTOMATIC SWITCHOFF – save power automatically



The Bachmann automatic switchoff unit allows efficient savings in power consumption without major wiring outlay in the hours when equipment is not in use. No longer is the proper shutdown of equipment left to chance; now power is conserved when consumption falls below a defined threshold. The effectiveness of this system exceeds the savings possible with master-and-slave power strips, since practically no standby current is drawn by the master device and power consumption during non-use hours is exactly zero. The automatic cutoff device thus saves some 70 euros annually in standby power.

Max. 16A/230V~



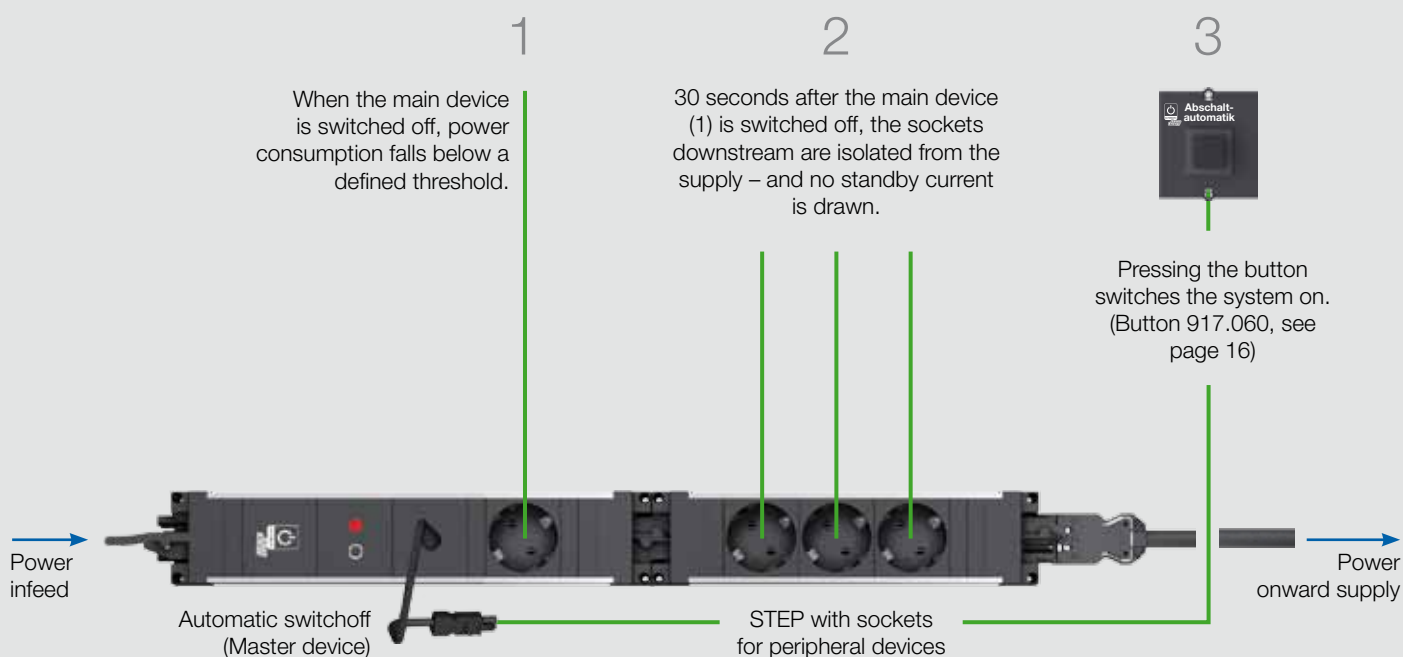
Art. no. | Price in €* | Version

STEP ALU, automatic switchoff, GST18, max. 16A / 230V~ / 3680W **Length: approx. 263 mm**

Suitable mountings on page 14

906.005	99.00	<ul style="list-style-type: none"> · Anodised aluminium profile, 1 U · 1 automatic switchoff unit with adjustable threshold · Power input: GST18i3 plug, black · Power outlet: GST18i3 socket, black · Incl. safety plug catch
---------	-------	---

How the automatic switchoff works



Tradesman's strips: robust professional quality

- Separate earth conductor up to 4 mm² can be connected directly
- Easily accessible terminal to allow connection of other conductor lengths
- End caps with additional screw holes for mounting on different profiles (T-slot or standard)
- Outlet sockets set at 90° with 15 mm additional spacing - ideal for mains plugs with large housings
- 2.0 m cable, H05VV-F 3G 1.50mm² with right-angle earthed plug

Art. no. | Price in €* | Version

Tradesman's strip, sockets set at 90°, max. 16A / 230V~ / 3680 W

Without switch

300.000	23.10	· 6 socket outlets with earthing contact, set at 90°
300.001	38.85	· 9 socket outlets with earthing contact, set at 90°
300.002	47.25	· 12 socket outlets with earthing contact, set at 90°

With switch, 2-pole, green, illuminated

300.003	25.73	· 6 socket outlets with earthing contact, set at 90°
300.004	41.48	· 9 socket outlets with earthing contact, set at 90°
300.005	49.88	· 12 socket outlets with earthing contact, set at 90°



Power strip for horizontal mounting

- Combination of sockets and various custom modules (see page 16)
- Can be mounted on T-slot profiles and standard profiles of various manufacturers with the metal mounting brackets provided, but these are fully insulated from the socket profile (ESD-capable)
- Power infeed direct to mains input via supply cable (see page 17) or via feed modules (see from page 6)

Art. no. | Price in €* | Version

Universal ALU, 2 x switch, 6 x earthed socket, max. 16A / 230V~ / 3680W

Length: approx. 920 mm

CUSTOM

906.039	115.00	<ul style="list-style-type: none"> · Anodised aluminium profile, >1 U · 1 switch, green, 2-pole, controls sockets · 3 socket outlets with earthing contact, set at 35° · 5 custom module covers, blank · 3 socket outlets with earthing contact, set at 35° · 1 switch, red, 2-pole, controls power outlet · Power input: GST18i3 plug, black · Incl. safety plug catch
---------	--------	--



TWIN: for workstations requiring a large number of sockets

- Compact dimensions thanks to arrangement of sockets on 2 profile tracks
- Can be mounted on T-slot profiles and standard profiles of various manufacturers with the metal mounting brackets provided, but these are fully insulated from the socket profile (ESD-capable)
- Strips can optionally be fitted with data or media technology modules (from page 16)
- Power infeed direct to mains input via supply cable (see page 17) or via feed modules (see from page 6)

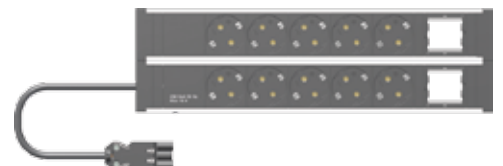
Art. no. | Price in €* | Version

Universal ALU, 10 x earthed socket, max. 16A / 230V~ / 3680W

Length: approx. 366 mm

CUSTOM

922.014	49.00	<ul style="list-style-type: none"> · Anodised aluminium profile, >1 U · 2 x 5 socket outlets with earthing contact, set at 35° · 2 custom module covers, blank · Power input: 0.1m H05VV-F 3G 1.50mm² black, with GST18i3 plug · Incl. 4 mounting brackets 940.096 (see page 8)
---------	-------	--



Fixings – suitable for all systems



Mountings for the FACTORY and STEP ranges of power strip onto T-slot profiles, standard profiles and tabletops

- ESD-compatible mountings
- Simple to fit, flexibly allow swapping
- Use standard M8 or M6 screws and ordinary tools

Fixing accessories for Bachmann PDUs



Art. no. | Price in €* | Version

Plastic bracket set for Factory, Step and Universal power strips

Plastic

509.000	3.20	<ul style="list-style-type: none"> · Plastic bracket set: · Holes for M8 and M6 bolts · Colour RAL7035 light grey
---------	------	--



Stainless steel mounting bracket

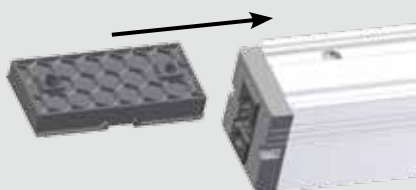
Stainless steel

940.096	3.59	<ul style="list-style-type: none"> · Inserts into rear of Factory and Step profiles and in endcap of Universal · Ideal when using power strips with data connections (data and media cables exit from rear) · 2 items, packed in polythene
---------	------	---

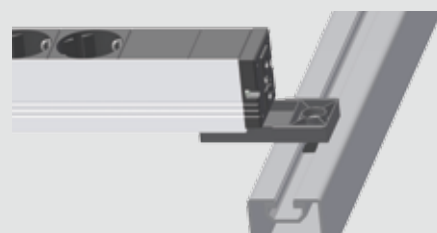
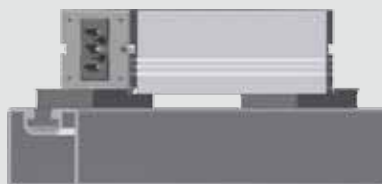


Bolts

509.015	5.10	<ul style="list-style-type: none"> · For 10 mm T-slot profile Contents: · 2 M6 x 16 bolts DIN 7984-8.8 · 2 U-washers for M6 (D6.4), zinc-plated · 2 T-slot nuts M6, zinc-plated
---------	------	--

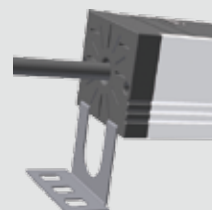


Plastic brackets allow versatile mounting on T-slot or standard profiles. The brackets are inserted into the profile groove on the rear of the strip. Suitable for power strips in the FACTORY and STEP series.



Use of brackets with STEP power strips with 36 mm height.

No ESD capability specified.



Uses of bracket with UNIVERSAL power strips. The bracket simply slots into the UNIVERSAL end cap and can be fixed in various positions.


DESK – versatile tabletop power strip

DESK power strips as tabletop units for workstations, to combine power outlets with data and media technology modules (from page 10)

- Combine power outlets with data and media modules
- Sockets and power outlets can be switched off to save energy
- Mounts on tabletop workstations with screws or brackets (available separately)
- Strips can optionally be fitted with data or media technology modules (see from page 16)
- Power infeed direct to mains input via supply cable (see page 17) or via feed modules (see from page 6)



Rear

 Max. 16A/230V~

Art. no. | Price in €* | Version

DESK 1 x switch, 3 x earthing contact, max. 16A / 230V~ / 3680W Length: approx. 268 mm

339.1001	51.91	<ul style="list-style-type: none"> • Anodised aluminium profile, black socket outlets • 1 switch, green, 2-pole, illuminated, controls sockets • 3 socket outlets with earthing contact, set at 35° • Power input: 3.0m H05VV-F 3G 1.50mm² black, with GST18i3 right-angle earthed plug • Incl. standard brackets
----------	-------	--



DESK 1 x switch, 3 x earthing contact, GST18, max. 16A / 230V~ / 3680W Length: approx. 368 mm

1 x custom module

902.017	50.96	<ul style="list-style-type: none"> • Anodised aluminium profile, black socket outlets • 1 switch, green, 2-pole, illuminated, controls sockets and power outlet • 3 socket outlets with earthing contact, set at 35° • 1 custom module cover, blank • Power input: GST18i3 plug, black • Power outlet: GST18i3 socket, black • Does not include brackets (available separately)
---------	-------	--

CUSTOM



DESK 1 x switch, 3 x earthing contact, GST18, max. 16A / 230V~ / 3680W Length: approx. 409 mm

2 x custom module

902.018	54.40	<ul style="list-style-type: none"> • Anodised aluminium profile, black socket outlets • 1 switch, green, 2-pole, illuminated, controls sockets and power outlet • 3 socket outlets with earthing contact, set at 35° • 2 custom module covers, blank • Power input: GST18i3 plug, black • Power outlet: GST18i3 socket, black • Does not include brackets (available separately)
---------	-------	---

CUSTOM



DESK Standard brackets for tabletop thicknesses up to 50 mm

930.120	5.15	<ul style="list-style-type: none"> • Anodised aluminium, material thickness approx. 9 mm Contents: <ul style="list-style-type: none"> • 2 x support brackets, anodised aluminium • 2 x M5 x 60 mm Allen bolts
---------	------	--



DESK endcap screws for tabletop thicknesses over 15 mm

930.183	2.08	<ul style="list-style-type: none"> • 2 Spax screws, 5 x 90 mm incl. brass threaded sleeve
---------	------	--



Custom modules – for networks, media and programming

Bachmann custom modules are the central building blocks for network and media or programming links, and fit easily and flexibly into power strip units with custom module covers.



- Flexibly interchangeable modules
- Simple to connect using socket/socket versions and connecting cables
- Can be purchased as a kit
- Can be fitted or replaced later
- Warranty is not affected by fitting/replacement since each frame is insulated separately
- Screws and frames are designed for approx. 10 bolting cycles
- Bolts = Torx T6
- For additional variations see the Bachmann Custom Modules catalogue



Module 2 x Keystone

Art. no. 917.000 1.26 €*

- Black module, accepts 2 data sockets with Keystone mounting system



Module 1 x Keystone

Art. no. 917.001 1.26 €*

- Black module, accepts 1 data socket with Keystone mounting system



LWL-LC Duplex Keystone

Art. no. 918.071 29.70 €*

- LWL-LC duplex adapter
- Keystone mounting system
- Suitable for modules 917.000 and 917.001



LWL-SC Keystone

Art. no. 918.072 16.40 €*

- LWL-SC adapter
- Keystone mounting system
- Suitable for modules 917.000 and 917.001



PS2 mouse + keyboard

Art. no. 917.031 36.10 €*

- Front: PS2 MiniDIN sockets (mint green for mouse and lilac for keyboard)
- Rear: PS2 MiniDIN sockets (mint green for mouse and lilac for keyboard)



HDMI

Art. no. 917.020 51.50 €*

- Front + rear: HDMI socket



Button for automatic switchoff

Art. no. 917.060 19.80 €*

- Front: Button, black, for automatic switchoff unit
- Rear: 1.0m H05VV-F 2 x 0.75mm² black with Wieland GST 15i2 plug connection
- Use in any socket unit with custom modules



CAT6 coupling socket/socket

Art. no. 940.044 14.49 €*

- Type: BTR E-DAT
- Front: RJ45 (Keystone fixing)
- Rear: RJ45 (E-DAT mounting)
- Shielded
- Suitable for modules 917.000 and 917.001



CAT5e adapter socket/socket

Art. no. 940.057 8.82 €*

- Front: RJ45 (Keystone fixing)
- Rear: RJ45 (Keystone fixing)
- Shielded
- Suitable for modules 917.000 and 917.001



ISDN RJ12 socket/socket

Art. no. 940.085 5.04 €*

- Front: RJ12 (Keystone fixing)
- Rear: RJ12 (Keystone fixing)
- Unshielded
- Suitable for modules 917.000 and 917.001



CAT6a 10GB Patch cable plug/socket 3.0m

Art. no. 918.033 29.90 €*

- Front: Socket RJ45 CAT6a TKM 10GB
- Cable, black, with RJ45 plug
- Shielded
- Suitable for modules 917.000 and 917.001



BNC R/G/B

Art. no. 917.090 41.43 €*

- Front + rear: BNC R/G/B socket



USB A/A

Art. no. 917.017 35.89 €*

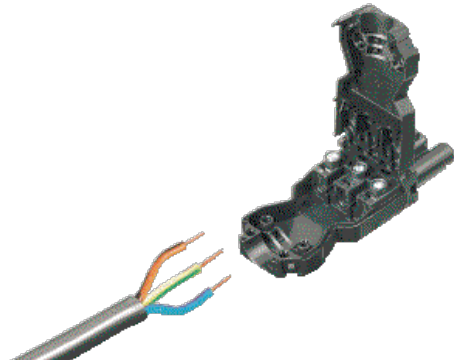
- Front + rear: USB A 2.0 socket



Supply cables and distributors **wieland**

For supplying or linking multiple power strips we offer cables featuring the Wieland GST18 connectors that are used worldwide.

- Prefabricated cables in various lengths
- Plug connectors conforming to world standards, contact-protected
- With mandatory latching to power strips
- Connect to power strips without tools
- Can subsequently be removed
- Power input can be earthed via the separate earthing connection on device supply cables 375.115 – 375.117



Art. no. | Price in €* | Version

Device supply cable, GST18/earthing contact

With extra earth connection

375.115	8.61	2.0 m	· Cable: H05VV-F 3G 1.50 mm ²
375.116	9.77	3.0 m	· End 1: Right angle plug with earthing contact
375.117	12.71	5.0 m	· End 2: Wieland GST18i3 socket with 0.3 m 2.5mm ² green/yellow with M6 ring termination

Device supply cable, GST18/earthing contact

375.000	6.93	1.5 m	· Cable: H05VV-F 3G 1.50 mm ²
375.075	7.46	2.0 m	· End 1: Right angle plug with earthing contact
375.003	8.80	3.0 m	· End 2: Wieland GST18i3 socket
375.005	10.29	4.0 m	
375.007	11.80	5.0 m	
375.039	17.58	10.0 m	

Device extension cable, GST18/GST18

375.050	6.97	0.3 m	· Cable: H05VV-F 3G 1.50 mm ²
375.053	7.67	1.0 m	· End 1: Wieland GST18i3 plug
375.038	8.44	2.0 m	· End 2: Wieland GST18i3 socket
375.055	9.22	3.0 m	

Tapping cable, GST18/earthing contact coupling

Extends length from - to

375.097	23.00	0.5-2.5 m	· Spiral device extension cable
375.098	35.80	1.0-5.0 m	· Cable: H07BQ-F 3G 1.50mm ² orange · End 1: Wieland GST18i3 plug · End 2: Earth contact coupling, black

Multipliers

For power distribution

375.101	8.21	1 x input, 2 x outlets (1)	· Input: 3-pin plug
375.102	11.80	1 x input, 2 x outlets (2)	· Outlet: 3-pin socket
375.105	10.84	1 x input, 2 x outlets (3)	

Through-wired for 3-phase power, 5 and 3-pole

375.106	38.49	1 x input, 1+6 x outlet	· Input: 1 x plug, 5-pin · Outlet: 1 x socket, 5-pin 6 x 3-pin socket per outer conductor
---------	-------	-------------------------	---

Adaptor

No interlock

375.500	2.75	GST input/GST outlet	· For simple connecting of e.g. two Factory power strips
---------	------	----------------------	--



Lighting for assembly areas

FACTORY LIGHT – good light for assembly workstations

Good lighting facilitates productivity and wellbeing. To meet the particular lighting requirements of assembly workstations, our collaboration with Siteco has developed highly specific lamp systems. These lamp types, for mounting horizontally above the work area or vertically on a standard profile, create bright light over a wide area of the workstation. Depending on specific requirements the lamps may be used singly or in combination. The outrigger lamp, for fitting to a vertical standard profile (770.000) can also be rotated and swivelled, allowing adjustment of the beam angle to the specific needs of the employees and the task. It offers the best conditions for absolutely glare-free light, facilitating efficient work and low fatigue levels. Both models use fluorescent light sources, anodised louvres and electronic ballast units to offer maximum effectiveness and greatest energy savings.



Art. no.	Price in €*	Version
----------	-------------	---------

SITECO Outrigger lamp for assembly areas**Length: 610 mm, width: 125 mm**

770.000	395.00	<ul style="list-style-type: none"> · Lamp in aluminium profile, RAL9006, matt · Incl. 1 x TC-L 36W / 840 light source · Electronic ballast to minimise power loss · Aluminium specular louvre, satin anodised, for high lighting comfort and high efficiency · Mounts on vertical profile frames · Outrigger arm turns through 360° and swivels through 180°, so can be set up individually · Can be mounted without opening lamp · GST 18/3 power input
---------	--------	--

SITECO Horizontal-mount lamp for assembly areas**Length: 899 mm, width: 87 mm (126 mm incl. bracket)**

770.001	375.00	<ul style="list-style-type: none"> · Lamp in aluminium profile, RAL9006, matt · Incl. 1 x T16 39W / 840 light source · Electronic ballast to minimise power loss · Aluminium specular louvre, satin anodised, for high lighting comfort and high efficiency · CRF (contrast rendering factor) louvre to avoid reflected glare · Mounts on horizontal roof section · Can be mounted without opening lamp · GST 18/3 power input + power output with 3-pole through wiring
---------	--------	--

Note

These lamps should be operated via BACHMANN FACTORY power strips with switched power outlets (see pages 4/5) or any other external switch.
They have no built-in switch of their own.

Eulumdat data is available on request.

FACTORY SPOTLIGHT – bringing light to a point

There are certain situations in which a particularly high brightness of light on the workpiece is essential.

The LED flexible-arm lamp (770.002) allows you to match the light intensity and angle of illumination quickly and flexibly to any work situation. The high-quality flexible tube allows quick and precise positioning of the lamp head. Thanks to the use of LEDs this remains considerably cooler than a 20 W halogen lamp, yet is brighter than a 35 W halogen lamp. Where there is a particular need for the illumination of a specific area, our LED flexible-arm lamp forms the ideal complement to wide-area workplace illumination.

(see FACTORY LIGHT 770.000 + 770.001).

Art. no. | Price in €* | Version

Flexible-arm LED lamp for assembly areas

770.002	360.00	<ul style="list-style-type: none"> · High-performance lamp head with 3 x 3W POWER LED, cool white, 30° beam angle · Up to 60,000 hours operation (designed for continuous use) · Illuminance 5000 lux at distance of 0.5 m · Luminous flux 600 lumens · Lamp head IP64 protected (against dust and splashwater) · Special mounting bracket for fitting to T-slot profiles of various manufacturers · External LED driver unit (IP20) with GST 18/3 power inlet · Flexible arm length 500 mm, lamp head diameter 75 mm
---------	--------	---



Cost comparison of LED lamp with conventional lighting

Type	LED lamp	Incandescent lamp	Halogen lamp
Acquisition costs of lamp in €	360.00	150.00	250.00
Cost of illuminant, each, in €	–	1.50	4.00
Lifetime of illuminant, hours	60.000	approx. 1000	approx. 2000
Power consumption	9 W	60 W	20 W
Illuminant costs after 60,000 operating hours, in €	–	90.00	120.00
Energy consumption after 60,000 operating hours, kWh	540	3.600	1.200
Costs (approx. 0.20 €/kWh)	108.00	720.00	240.00
Total costs after 60,000 operating hours, in €	468.00	960.00	610.00

Calculated for 60,000 operating hours



See our catalogues for a detailed overview of our product ranges.

**BACH
MANN**

Bachmann GmbH & Co. KG

Ernstthaldenstr. 33, 70565 Stuttgart, Germany

Telephone +49 711 86602-0, Fax +49 711 86602-34

info@bachmann.com, www.bachmann.com